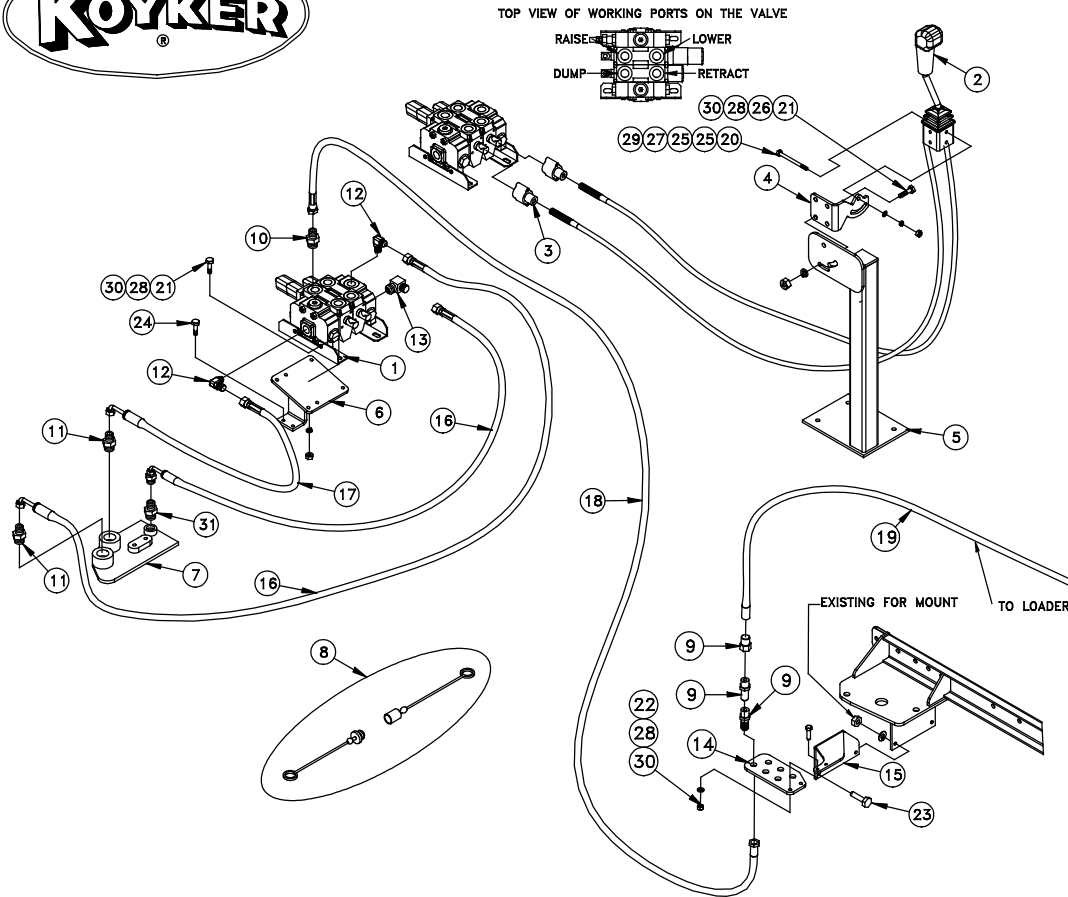


677862 2 SPOOL PLUMBING KIT FOR CASE-IH 5130-5140-5230-5240-5250

KOYKER MANUFACTURING CO., LENNOX SD  
800-456-1107 E-MAIL KOYKER@KOYKERMFG.COM



KEY	PART NO.	DESCRIPTION	QTY.
1	668962	2 SPOOL VALVE (LOAD SENSING)	1
2	683155	JOYSTICK CABLE CONTROL KIT W/78" CABLES	1
3	669298	CABLE CONNECTOR KIT	2
4	684725	JOYSTICK HANDLE BRACKET	1
5	670395	HANDLE STAND WELDMENT	1
6	677590	BRACKET-VALVE WELDMENT	1
7	675075	HYDRAULIC BLOCK CASE IH KIT	1
8	673956	COLOR COUPLER PLUG KIT 2 SPOOL	1
9	673740	QUICK COUPLER SET; 1/2" O-RING	4
10	659838	ADAPTER; 8MJIC-10ORM	4
11	659839	ADAPTER; 8MJIC-12ORM	2
12	660057	90° ELBOW; 8FJX-10ORM	1
13	675513	90° ELBOW; 8MJX-10ORM	1
14	672858	COUPLER PLATE	1
15	677849	PLATE MID MOUNT	1
16	659774	30" HYDRAULIC HOSE (PRESSURE & RETURN)	1
17	659307	26" HYDRAULIC HOSE (LOAD SENSE)	1
18	675462	120" HYDRAULIC HOSE	4
19	673909	72" HYDRAULIC HOSE	4
31	659837	ADAPTER; 6MJIC-6ORM	1
	669686	36" HOSE WRAP	2
	663708	JOYSTICK DECAL	1
	#241	HARDWARE BAG	1
20	669618	HH CAP SCREW; 5/16" x 3 1/2"	2
21	640028	HH CAP SCREW; 3/8" x 1"	6
22	640034	HH CAP SCREW; 3/8" x 1 1/2"	5
23	640060	HH CAP SCREW; 1/2" x 1 3/4"	2
24	653043	HH CAP SCREW; 10MM - 1.5P X 30MM	2
25	640152	FLATWASHER; 5/16"	4
26	640154	FLATWASHER; 3/8"	1
27	640151	LOCKWASHER; 5/16"	2
28	640153	LOCKWASHER; 3/8"	11
29	652360	HEXNUT; 5/16"	2
30	640132	HEXNUT; 3/8"	11

INSTALLATION NOTES:

1. INSTALL ALL PARTS WITH APPROPRIATE FASTENERS "FINGER TIGHT," BEFORE TIGHTENING ANY BOLT.
2. THE FASTENERS PROVIDED ARE OF A GRADE 5 OR 8 QUALITY OR BETTER. USE ONLY THIS GRADE OR BETTER. FAILURE TO DO SO MAY RESULT IN DAMAGE TO THE LOADER AND/OR TRACTOR TO WHICH IT IS MOUNTED.
3. BE SURE ALL BOLTS ARE SECURELY TIGHTENED TO APPROPRIATE TORQUE RATINGS BEFORE ATTACHING LOADER.
4. PERIODICALLY CHECK FOR LOOSE BOLTS DUE TO NORMAL OPERATION AND VIBRATION.
5. OPERATE THE LOADER SAFELY AND PROPERLY. READ THE OWNERS MANUAL FOR RECOMMENDATIONS.