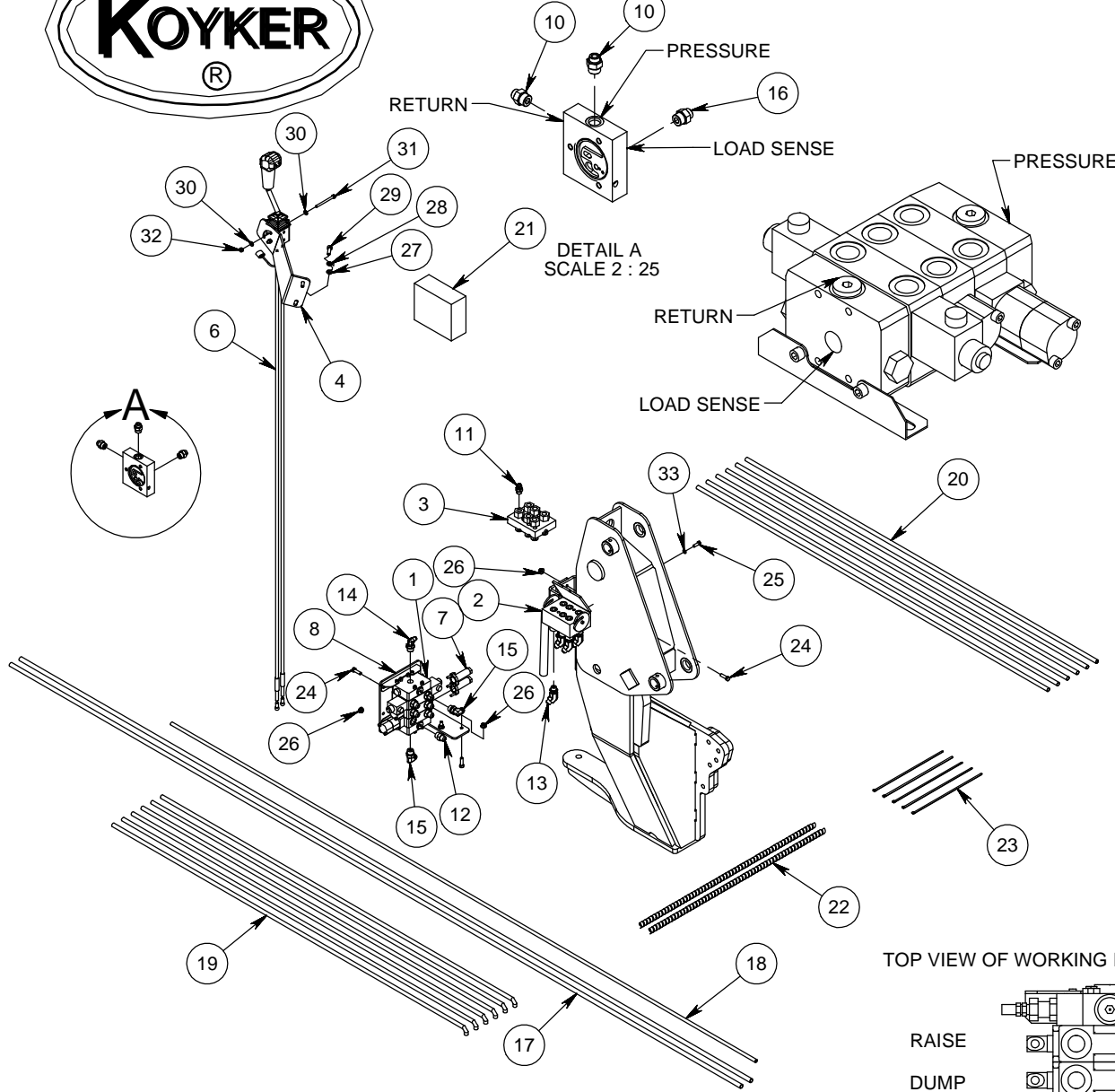


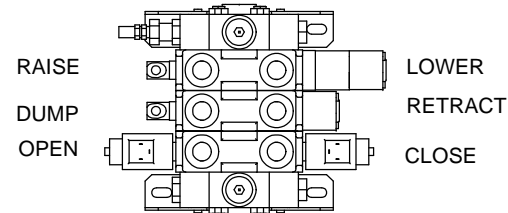


SHORT LINE PARTS |
SALES@SHORTLINEPARTS.COM
WWW.SHORTLINEPARTS.COM



| ITEM NO. | QTY. | PART NO. | DESCRIPTION |
|----------|------|----------|--|
| 1 | 1 | 668963 | 3 SPOOL LOAD SENSING VALVE |
| 2 | 1 | 678752 | FEMALE BLOCK - 3 FUNCTION |
| 3 | 1 | 678753 | MALE BLOCK - 3 FUNCTION |
| 4 | 1 | 691095 | JOYSTICK MOUNT PLATE |
| 5 | 1 | 681397 | BRACKET |
| 6 | 1 | 683155 | KIT-JOYSTICK BENT 78" 3 SP |
| 7 | 2 | 669298 | CABLE CONNECTOR KIT |
| 8 | 1 | 684761 | PLATE-VALVE |
| 9 | 1 | 672274 | HYDRAULIC BLOCK KIT |
| 10 | 2 | 672888 | FITTING - HYD ADA 8MJX-22MM-1.5 PITCH |
| 11 | 6 | 675515 | FITTING - HYD ADA 8MJX - 8 ORM |
| 12 | 6 | 659838 | FITTING - HYD ADA 8MJX - 10ORM |
| 13 | 6 | 641429 | FITTING - HYD 45 ELBOW 8MJX -8ORM |
| 14 | 1 | 679501 | FITTING-HYD 90 ELB 6 MJX - 10 ORM |
| 15 | 2 | 675513 | FITTING -HYD 90 ELB 8MJIC - 10 ORM |
| 16 | 1 | 672887 | FITTING - HYD ADA 6MJX-12MM-1.5 PITCH |
| 17 | 2 | 678304 | HYD HOSE .5-150 8FJX-8FJX90 |
| 18 | 1 | 690638 | 120" HYDRAULIC HOSE |
| 19 | 6 | 673791 | HYD HOSE .5-72 8FJX-8FJX90 |
| 20 | 6 | 676373 | HYD HOSE .5-72 8MJX-8FJX |
| 21 | 1 | 683162 | WIRING HARNESS |
| 22 | 2 | 669686 | 36" HOSE WRAP |
| 23 | 5 | 652393 | 14.25 NYLON CABLE TIE |
| 24 | 9 | 640032 | SCREW-.375-16 X 1.25 GR 5 HHC |
| 25 | 4 | 676296 | SCREW - 8MM - 1.25 X 25 GR 8.8 HHC |
| 26 | 9 | 682413 | NUT - .375 X 16 FLANGE |
| 27 | 1 | 640154 | WASHER - 3/8" FLAT |
| 28 | 2 | 640155 | WASHER-SPRING LOCK .438 |
| 29 | 2 | 653043 | SCREW - 10MM - 1.50 X 30 GR 8.8 HHC |
| 30 | 3 | 640152 | WASHER - 5/16" FLAT |
| 31 | 2 | 669618 | SCREW-.3125-18 X 3.50 GR 5 HHC |
| 32 | 2 | 654141 | NUT - .313 - 18 GR 2 LOCK NYLON INSERT |
| 33 | 4 | 640151 | WASHER - 5/16" SPRING LOCK |

TOP VIEW OF WORKING PORTS ON THE VALVE



NOTE:
1. REFER TO WRITTEN INSTRUCTIONS ON ADDITIONAL INFORMATION TO INSTALL KIT.
2. USE HOSE WRAP AND NYLON TIES TO SECURE HOSES TOGETHER.