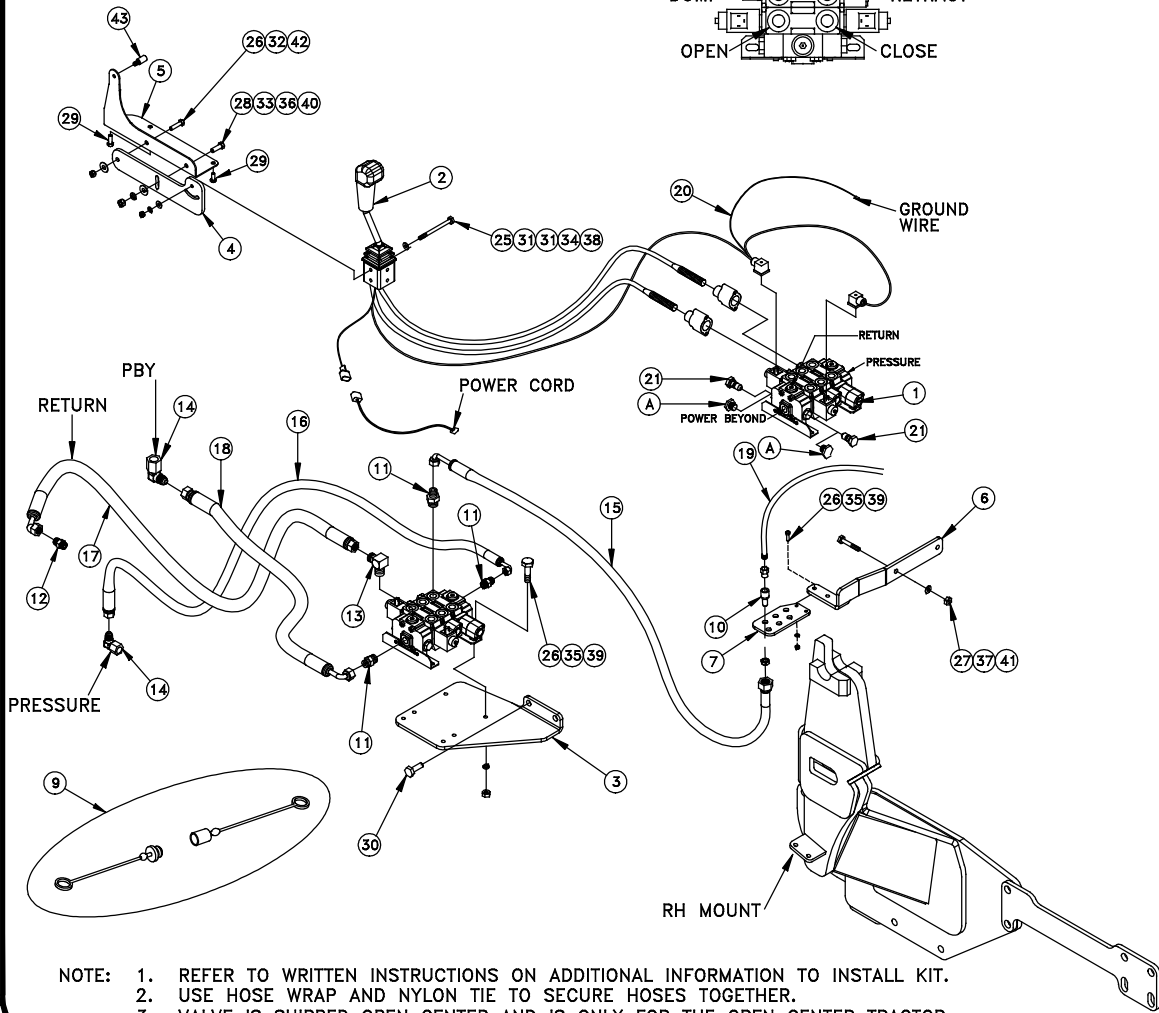
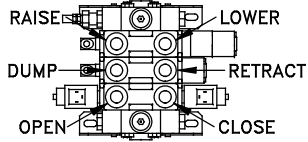


680366 3 SPOOL PLUMBING KIT FOR MASSEY FERGUSON 5435-5445-5455-5460-5465-5475



KOYKER MANUFACTURING CO., LENNOX SD
800-456-1107 E-MAIL KOYKER@KOYKERMFG.COM
TOP VIEW OF WORKING PORTS ON THE VALVE



- NOTE: 1. REFER TO WRITTEN INSTRUCTIONS ON ADDITIONAL INFORMATION TO INSTALL KIT.
2. USE HOSE WRAP AND NYLON TIE TO SECURE HOSES TOGETHER.
3. VALVE IS SHIPPED OPEN CENTER AND IS ONLY FOR THE OPEN CENTER TRACTOR.

KEY	PART NO.	DESCRIPTION	QTY.
1	668961	3 SPOOL VALVE	1
2	683153	JOYSTICK CABLE CONTROL KIT W/59" CABLES	1
3	680351	VALVE PLATE	1
4	673805	JOYSTICK HANDLE BRACKET	1
5	673806	JOYSTICK HANDLE BRACKET ADAPTER	1
6	680364	MID COUPLER EXHAUST BRACKET	1
7	672858	COUPLER PLATE	1
8	669298	CABLE CONNECTOR KIT	2
9	673957	COLOR COUPLER PLUG KIT	1
10	673740	QUICK COUPLER SET W/ BULKHEAD ADAPTER 8 OR	1
11	659838	ADAPTER; -10 O-RING MALE x -8 JIC MALE	8
12	672888	ADAPTER; -8 JIC MALE x 22MM - 1.5 P MALE	1
13	675513	90° ELBOW; -8 JIC MALE x -10 O-RING MALE	2
14	665925	90° ELBOW; -8 JIC MALE x -10 JIC FEMALE	2
15	676925	30" HYDRAULIC HOSE (WORKING)	6
16	675512	45" HYDRAULIC HOSE (PRESSURE)	1
17	676981	60" HYDRAULIC HOSE (RETURN)	1
18	673791	72" HYDRAULIC HOSE (PBY)	1
19	673909	72" HYDRAULIC HOSE (MID COUPLER TO LOADER)	6
20	683162	WIRING HARNESS	1
21	668964	POWER BEYOND PLUG	2
	669686	36" HOSE WRAP	1
	652393	NYLON TIE	5
	#357	HARDWARE BAG	1
25	669618	HH CAP SCREW; 5/16" x 3 1/2"	2
26	640032	HH CAP SCREW; 3/8" x 1 1/4"	7
27	640049	HH CAP SCREW; 7/16" x 1 1/4"	2
28	640064	HH CAP SCREW; 1/2" x 2 1/2"	2
29	663327	SELF-TAPPING SCREW; 3/8" x 1"	2
30	640890	HH CAP SCREW; 16MM-2.OP X 100MM	2
31	640152	FLATWASHER; 5/16"	4
32	640154	FLATWASHER; 3/8"	1
33	640156	FLATWASHER; 7/16"	1
34	640151	LOCKWASHER; 5/16"	2
35	640153	LOCKWASHER; 3/8"	6
36	640155	LOCKWASHER; 7/16"	1
37	640157	LOCKWASHER; 1/2"	2
38	652360	HEXNUT; 5/16"	2
39	640132	HEXNUT; 3/8"	6
40	640137	HEXNUT; 7/16"	1
41	640139	HEXNUT; 1/2"	2
42	654121	LOCKNUT; 3/8"	1
43	679560	ROUND-EXTENSION SPACER	1
	663708	JOYSTICK DECAL	1