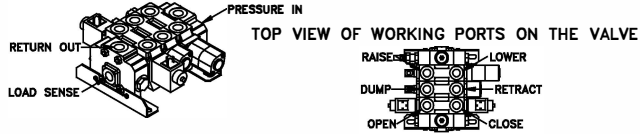
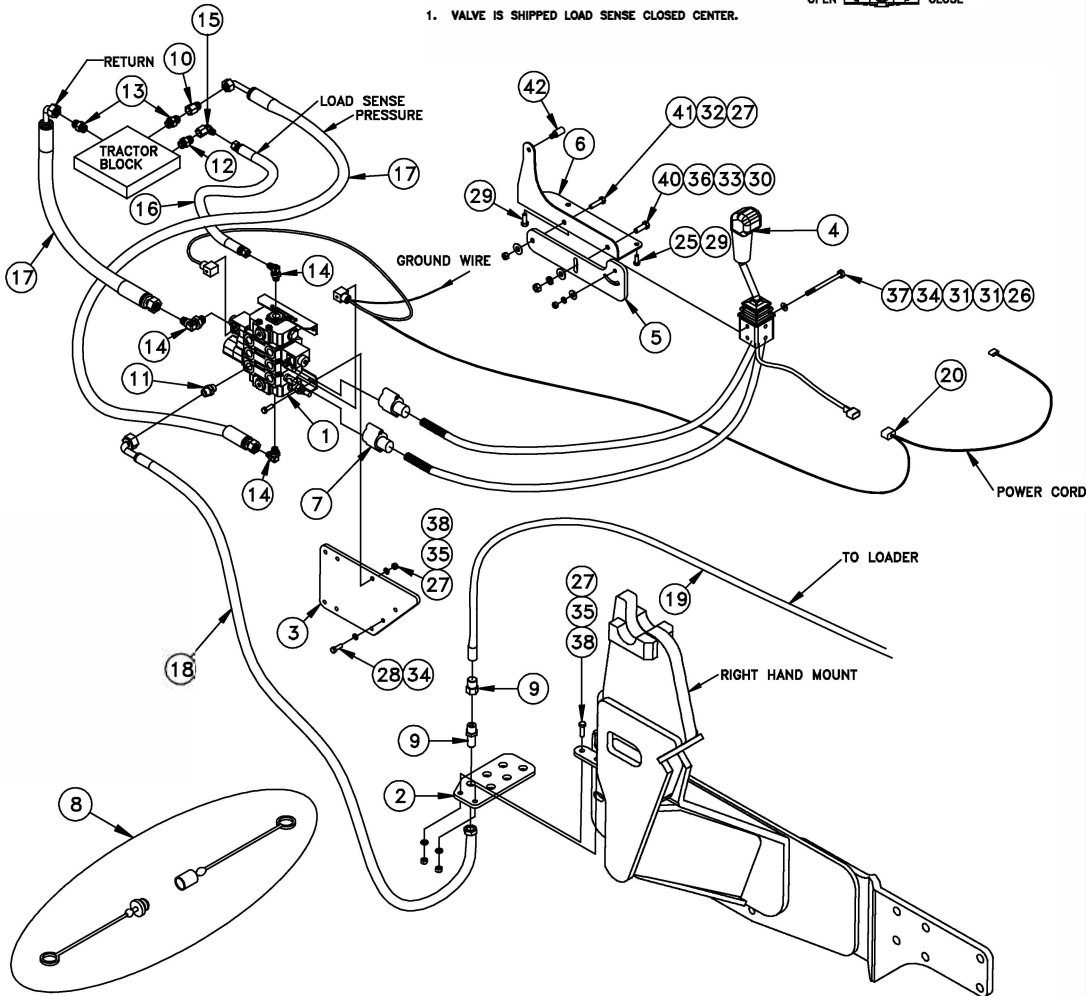


680084 3 SPOOL PLUMBING KIT FOR MCCORMICK MTX110-MTX125-MTX140

SHORT LINE PARTS | WWW.SHORTLINEPARTS.COM
SALES@SHORTLINEPARTS.COM



1. VALVE IS SHIPPED LOAD SENSE CLOSED CENTER.



KEY	PART NO.	DESCRIPTION	QTY.
1	668963	3 SPOOL VALVE (LOAD SENSING)	1
2	672858	COUPLER PLATE	1
3	673081	VALVE PLATE	1
4	6831 55	JOYSTICK CABLE CONTROL KIT W/78" CABLES	1
5	673805	JOYSTICK HANDLE PLATE	1
6	673806	JOYSTICK HANDLE BRACKET ADAPTER	1
7	669298	CABLE CONNECTOR KIT	2
8	673957	COLOR COUPLER PLUG KIT	1
9	673740	QUICK COUPLER SET	6
10	2406-8-8	ADAPTER; 8MJX-8FJX	1
11	6400-8-10	ADAPTER; 8MJX-10ORM	6
12	8MJIC-18MM1.5	ADAPTER; -8MJIC-18MM-1.5 ORM (LOAD SENSE)	1
13	8MJIC-22MM1.5	ADAPTER; 8MJX-22MM-1.5 ORM (RETURN & PRESSURE)	2
14	6801-8-10	ELBOW; 8MJIC-10ORM 90°	3
15	6500-8-8	ELBOW; 8MJIC-8FJIC 90°	1
16	663287	57" HYDRAULIC HOSE (LOAD SENSE)	1
17	676981	60" HYDRAULIC HOSE (PRESSURE & RETURN)	2
18	673791	72" HYDRAULIC HOSE (VALVE TO COUPLER PLATE)	6
19	673909	72" HYDRAULIC HOSE (COUPLER PLATE TO LOADER)	6
20	683162	WIRING HARNESS	1
	669686	36" HOSE WRAP	2
	652393	NYLON TIE	5
	#338	HARDWARE BAG	1
25	655481	HH CAP SCREW; 8MM x 1.25 PITCH x 20MM	1
26	669618	HH CAP SCREW; 5/16" x 3 1/2"	2
27	640032	HH CAP SCREW; 3/8" x 1 1/4"	7
28	652375	HH CAP SCREW; 12MM x 1.75 PITCH x 30MM	2
29	663327	SELF-TAPPING SCREW; 3/8" x 1"	2
30	640049	HH CAP SCREW; 7/16" x 1 1/4"	1
31	640152	FLATWASHER; 5/16"	4
32	640154	FLATWASHER; 3/8"	1
33	640156	FLATWASHER; 7/16"	1
34	640151	LOCKWASHER; 5/16"	4
35	640153	LOCKWASHER; 3/8"	6
36	659717	LOCKWASHER; 7/16"	1
37	652360	HEXNUT; 5/16"	2
38	640132	HEXNUT; 3/8"	6
39	673344	HEXNUT; 14MM x 1.5 PITCH	2
40	640136	HEXNUT; 7/16"	1
41	654121	LOCKNUT; 3/8"	1
42	679560	ROUND-EXTENSION SPACER	1
	663708	JOYSTICK DECAL	1

- NOTE 1. USE HOSE WRAP AND TIES TO SECURE HOSES TOGETHER.
2. USE COUPLER PLUGS TO COVER QUICK COUPLER ENDS WHEN UNATTACHED.

KOYKER MANUFACTURING LENNOX, SD

3 SPOOL PLUMBING KIT #680084

McCormick MTX110-MTX125-MTX140

INSTALLATION INSTRUCTIONS:

1. Mount kit should be installed before proceeding to ensure that there is no interference.
2. First locate the remotes kit to verify tractor. **See in Fig. 1-1 and Fig 1-2.**
3. Install nine adapters (Part #11 and 14) into the pressure, return, load sense and all the working ports on the top of the valve. Note: Attach all fasteners loosely to allow for desired adjustment later.
4. Install the valve (Part 1) onto the valve plate (Part #3) with four 3/8" x 1 1/4" HH cap screws, lock washers and hex nuts (Part #27, 35 & 38).
5. Once that has been done attach the valve plate (Part #3) onto the RH side of the tractor in front rear axle. Secure with two 12mm – 1.5 P x 30mm HH cap screws and lock washers (Part #28 & 34). **See in Fig. 1-3.**
6. Next the joystick handle bracket (Part #6) must be attached to the seat with 3/8" x 1" HH self tap cap screws and, if needed use the extension spacer round (Part #29 & 42). Then attach this handle bracket adapter plate (Part #5) with 3/8" x 1 1/4" HH cap screws, 3/8" flat washer, 3/8" center lock nut, 7/16" x 1 1/4" HH cap screws, 7/16" flat washer, 7/16" spring lock washer and 7/16" hex nut (Part #27, 32, 41, 30, 33, 36 & 40). Note: Attach all fasteners loosely to allow for desired adjustment later.
7. Next the joystick handle bracket (Part #5) must be attached to the joystick cable control kit (Part #4) with two 5/16" x 3 1/2" HH cap screws, lock washers, hex nuts and flat washer (Part #26, 31, 31, 34 & 37), if joystick needs a 1/4 turn remove two sleeves for the bolts from joystick and reinsert them at a 1/4 turn. Note: Attach all fasteners loosely to allow for desired adjustment later. You need to cut a hole thru the cab floor to route the cable ends down through the hole in the cab floor just ahead of the side counsel. Adjust the according brackets to acquire the most desirable position for the joystick handle. **See in Fig 1-4.**
8. When this has been done attach the cable ends to the valve body with the connector kits (Part #7). **Note: Make sure the joystick is in the locked position.** (Center the joystick and push the joystick knob in (located on the side of joystick) to lock joystick.) First screw the nut on to the cable then put the small o-ring on the cable past the threads. Slide large o-ring on the connector and thread the cable connector and slide the valve controller on the cable. Now thread the small nut and the pin connector onto the

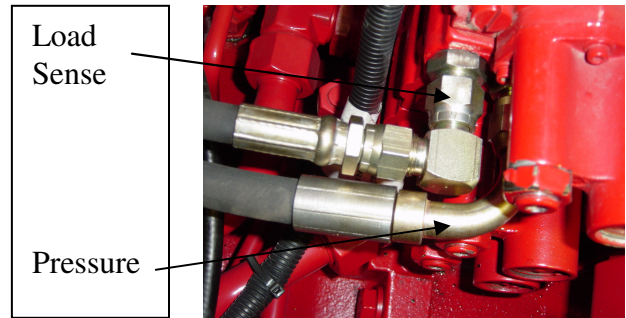


Fig 1-1

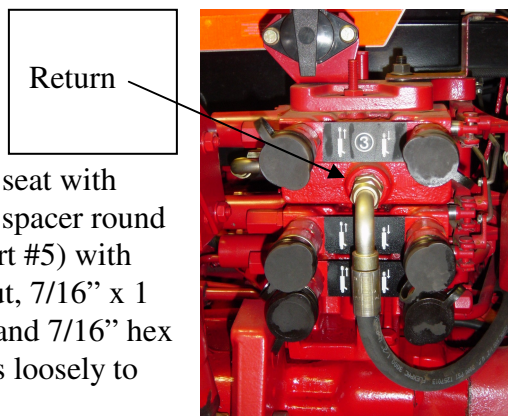


Fig 1-2



Fig 1-3

cable and tighten. Make sure the end of the cable does not hit the valve push rod. Now push pin connector onto the valve push rod and slide the pin through the holes. Thread the cable connector to the valve by hand. **Note: Only hand tighten the valve connector, if over tighten the joystick will not be right.** Now push large o-ring to the valve into the groove of cable connector. Then slide the valve connector to the valve and bolt together with given Allen head bolts. Slide the small o-ring to cable connector groove on the end and thread the large nut to cable connector and tighten. **Note: Make sure the cable connector does not move. See in Fig. 1-5.**



Fig 1-4

9. Next attach the wiring harness (Part #20) onto the valve, and route up to the joystick handle. Attach the ends together.

You will have to supply electrical power to the wiring harness via the tractor. Note: Make sure the power source for the valve is connected to the key switch so the electric 3rd function can not operate with key switch in the “off” position.

10. Route the 57” and 60” hoses (Part #16 & 17) underneath the tractor cab and attach to the proper ports on the manifold block already installed on the back of the tractor. See instruction sheet for proper connections. **See in Fig. 1-1 and Fig 1-2.**

11. Next put the bulk head adapters and the male half (Part #9) on the mid-mount couple plate (Part #2). Note: At this point install the female half of the colored plugs (Part #8) along with the couplers.

12. Now install the mid-mount couple plate (Part #2) with two 3/8” x 1 1/4” HH cap screws, lock washers and hex nuts (Part #27, 35 & 38). **See in Fig. 1-6.**

13. Run hydraulic 72” hoses (Part #18) from valve to mid-mount coupler.

14. After this has been done attach the female half of the quick coupler (Part #9) onto the 72” hoses (Part #19). Note: At this point install the male half of the colored plugs (Part #8). Attach the other end of the hoses to the steel oil lines on the loader frame. Then attach to the mid-mount coupler. Refer to the top view of the working port diagram and the loader manual to determine the function of the port. **TIGHTEN ALL THE CONNECTIONS SECURELY!**

15. Secure hoses together with the 36” of hose wrap and nylon ties to make sure they do not interfere with any tractor function.

16. Finally start the tractor, actuate the loader to charge the hydraulic system with oil and add hydraulic fluid to the tractor as required using the recommended fluid for your tractor. Refer to the hydraulic section of the tractor owner’s manual for the specific details regarding hydraulic fluid levels.

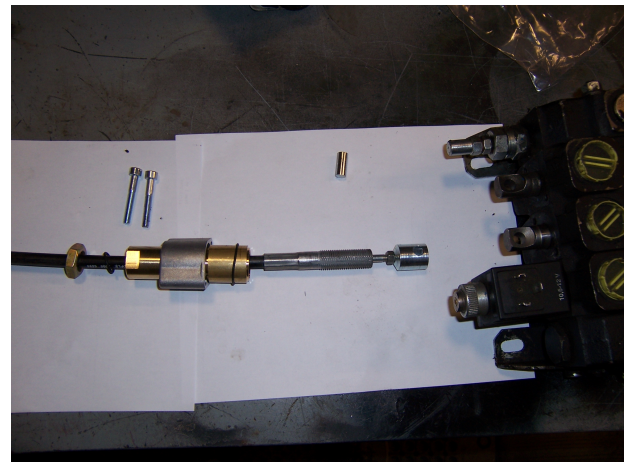
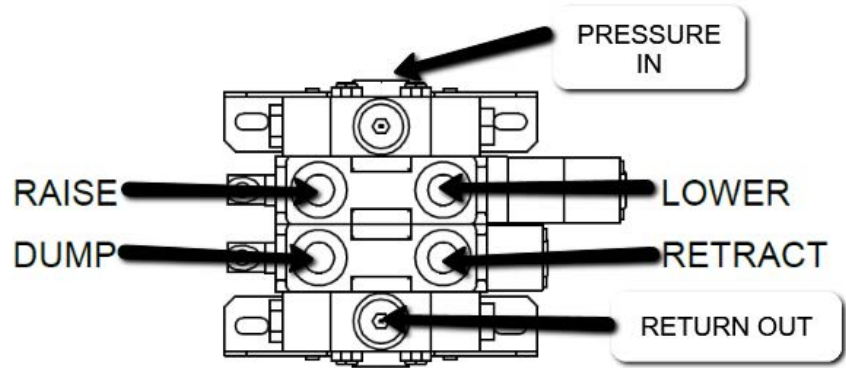


Fig 1-5



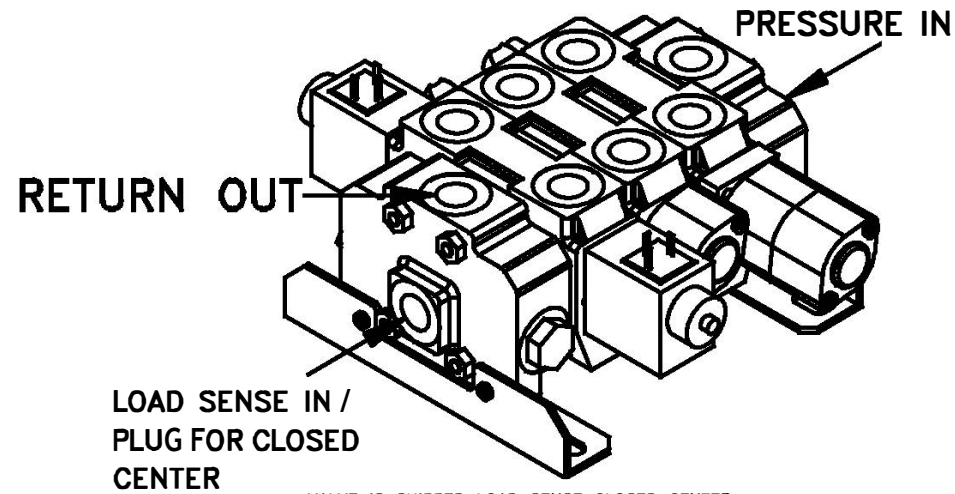
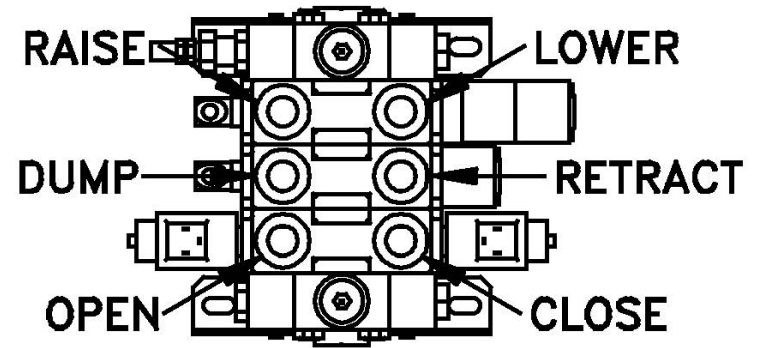
Fig 1-6

2 SPOOL LOAD SENSING/CLOSED CENTER VALVE
PORTS LABELED



LOAD SENSE IN /
PLUG FOR CLOSED
CENTER

3 SPOOL LOAD SENSING/CLOSED CENTER
VALVE PORTS LABELED



VALVE IS SHIPPED LOAD SENSE CLOSED CENTER.

VIDEOS:

CONNECTING CABLES TO VALVE:

<https://youtu.be/AOKy1CnuU4o>



CONNECTING CABLES TO JOYSTICK:

<https://youtu.be/vbcYCtpPtaw>

